

# Eco-Clean Energy Recovery Ventilator

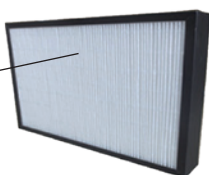
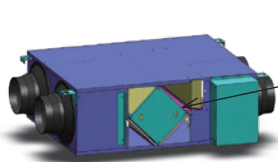


XHBQ-D2PMTH-XHBQ-D13PMTH



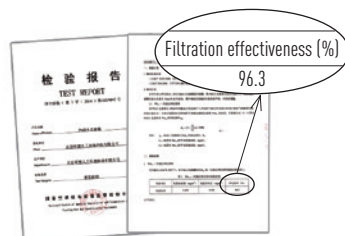
XHBQ-D15PMTG-XHBQ-D30PMTG

## Filtration Effectiveness 96%



**Sub HEPA F9 filter**

1. Double high efficient filters;
2. Operating theatre clean class material;
3. Filtration class is up to F9, passing national GB/T 14295 standards.



Filtration efficiency test report



## Specifications

Model	Airflow (m <sup>3</sup> /h)			External Pressure (Pa)			Enthalpy Efficiency (%)						Temp. Efficiency (%)			Noise dB(A)			Volt. (V)	Current (A)	Input Power (W)	N. W. (Kg)
							Summer			Winter												
	L	M	H	L	M	H	L	M	H	L	M	H	L	M	H	L	M	H				
XHBQ-D2PMTH	150	200	200	50	60	65	60	55	55	63	59	59	75	70	70	25	30	31.5	220	0.45	95	24.5
XHBQ-D3PMTH	250	300	300	65	72	75	62	57	57	65	61	61	73	68	68	27	34	34.5	220	0.53	110	26.5
XHBQ-D4PMTH	350	400	400	70	75	78	62	57	57	65	60	60	74	69	69	31	37	37.5	220	0.65	145	33
XHBQ-D6PMTH	500	600	600	79	82	87	63	59	59	67	61	61	76	70	70	29	35	39	220	0.92	195	38
XHBQ-D8PMTH	700	800	800	82	86	90	57	55	55	63	57	57	74	68	68	34	39	41	220	1.7	355	62
XHBQ-D10PMTH	900	1000	1000	70	75	76	60	58	58	64	62	62	76	70	70	34	38	42	220	2.1	440	72
XHBQ-D13PMTH	1000	1300	1300	65	75	80	58	56	56	62	59	59	76	70	70	38	41	43	220	3.4	710	81

Model	Airflow (m <sup>3</sup> /h)			External pressure (Pa)			Enthalpy Efficiency (%)						Temp. Efficiency (%)			Noise dB(A)			Volt. (V)	Current (A)			Input Power (W)			N. W. (Kg)
							Summer			Winter																
	L	M	H	L	M	H	L	M	H	L	M	H	L	M	H	L	M	H		L	M	H	L	M	H	
XHBQ-D15PMTG	1000	1500	1500	74	125	153	69	66	66	74	70	70	74	71	71	46	49	51	220	2.3	3.6	3.8	485	740	785	115
XHBQ-D20PMTG	1200	2000	2000	95	106	160	65	62	62	74	71	71	74	71	71	49	51	53		3	4.6	4.8	650	980	1020	117
XHBQ-D25PMTG	2000	2500	2500	125	155	185	64	61	61	72	70	70	73	70	70	50	52	55		4.5	6	6.3	940	1250	1300	137
XHBQ-D30PMTG	2500	3000	3000	135	165	195	63	60	60	71	69	69	73	70	70	51	54	57		6.5	8.7	9	1400	1870	1950	150



## Eco-Vent Energy Recovery Ventilator

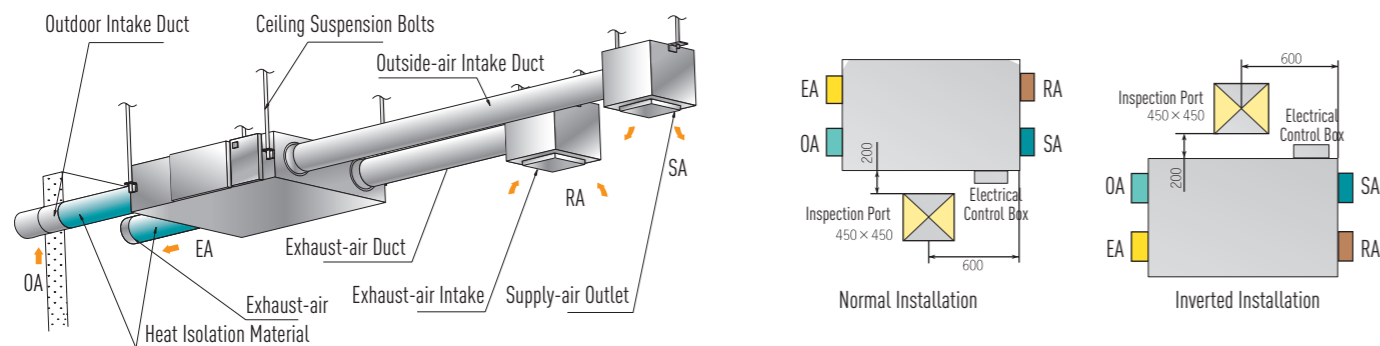
### TH Series

- Airflow from 150-1300 m<sup>3</sup>/h
- Energy recovery
- Crossflow heat exchanger
- Quiet operation
- Double filters
- Easy installation to ceiling
- By-pass function



XHBQ-D2TH ~ XHBQ-D13TH

### Installation



### Specifications

Model	Airflow (m <sup>3</sup> /h)			External Pressure (Pa)			Enthalpy Efficiency (%)						Temp. Efficiency (%)			Noise dB(A)			Volt. (V)	Current (A)	Input Power (W)			N. W. (Kg)
	L	M	H	L	M	H	Summer			Winter			L	M	H	L	M	H			L	M	H	
XHBQ-D2TH	150	200	200	60	70	75	60	55	55	63	59	59	75	70	70	25	30	31.5	220	0.5	105	23		
XHBQ-D3TH	250	300	300	75	82	85	62	57	57	65	61	61	73	68	68	27	34	34.5	220	0.56	117	25		
XHBQ-D4TH	350	400	400	80	85	88	62	57	57	65	60	60	74	69	69	31	37	37.5	220	0.72	150	31		
XHBQ-D6TH	500	600	600	89	92	97	63	59	59	67	61	61	76	70	70	29	35	39	220	0.96	200	36		
XHBQ-D8TH	700	800	800	92	96	100	57	55	55	63	57	57	74	68	68	34	39	41	220	1.7	355	60		
XHBQ-D10TH	900	1000	1000	80	85	86	60	58	58	64	62	62	76	70	70	34	38	42	220	2.1	440	70		
XHBQ-D13TH	1000	1300	1300	75	85	90	58	56	56	62	59	59	76	70	70	38	41	43	220	3.4	710	79		

### TZ Series

- Airflow from 800-1000 m<sup>3</sup>/h
- Energy recovery
- High ESP construction
- Quiet operation
- Double filters
- Easy installation to ceiling
- By-pass function



XHBQ-D8TZ ~ XHBQ-D10TZ

### Specifications

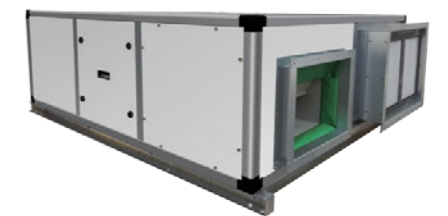
Model	Airflow (m <sup>3</sup> /h)			External Pressure (Pa)			Enthalpy Efficiency (%)						Temp. Efficiency (%)			Noise dB(A)			Volt. (V)	Current (A)	Input Power (W)			N. W. (Kg)
	L	M	H	L	M	H	Summer			Winter			L	M	H	L	M	H			L	M	H	
XHBQ-D8TZ	680	800	800	120	125	170	58	55	55	64	57	57	75	68	68	37	40	43	220	2.8	585	60		
XHBQ-D10TZ	840	1000	1000	105	120	175	60	57	57	63	61	61	75	69	69	36	42	44	220	3.3	690	79		

### TG Series / H Series

- Energy recovery
- Double skin panel with PU insulation of 20 mm
- Quiet operation
- Improved design with higher external static pressure
- Innovative access space design
- Double filters



XHBQ-D15TG ~ XHBQ-D30TG



XHBQ-D40H ~ XHBQ-D60H

### Specifications

Model	Airflow (m <sup>3</sup> /h)			External Pressure (Pa)			Enthalpy Efficiency (%)						Temp. Efficiency (%)			Noise dB(A)			Volt. (V)	Current (A)			Input Power (W)			N. W. (Kg)
	L	M	H	L	M	H	Summer			Winter			L	M	H	L	M	H		L	M	H	L	M	H	
XHBQ-D15TG	1000	1500	1500	84	135	163	69	66	66	74	70	70	74	71	71	46	49	51	220	2.3	3.6	3.8	485	740	785	110
XHBQ-D20TG	1200	2000	2000	110	132	176	65	62	62	73	71	71	74	71	71	49	51	53		3.0	4.6	4.8	650	980	1020	112
XHBQ-D25TG	2000	2500	2500	140	170	200	64	61	61	72	70	70	73	70	70	50	52	55		4.5	6.0	6.3	940	1250	1300	130
XHBQ-D30TG	2500	3000	3000	150	180	210	63	60	60	71	69	69	73	70	70	51	54	57		6.5	8.7	9.0	1400	1870	1950	142

Model	Airflow (m <sup>3</sup> /h)	External Pressure (Pa)	Enthalpy Efficiency (%)		Temp. Efficiency (%)	Noise dB(A)	Volt. (V)	Current (A)			Input Power (W)			N. W. (Kg)
			Summer	Winter				L	M	H	L	M	H	
XHBQ-D40H	4000	260	62	69	70	59	380	5.6			2000			240
XHBQ-D50H	5000	260	61	64	70	68		8.4			3000			300
XHBQ-D60H	6000	300	60	62	68	70		11.8			4400			355